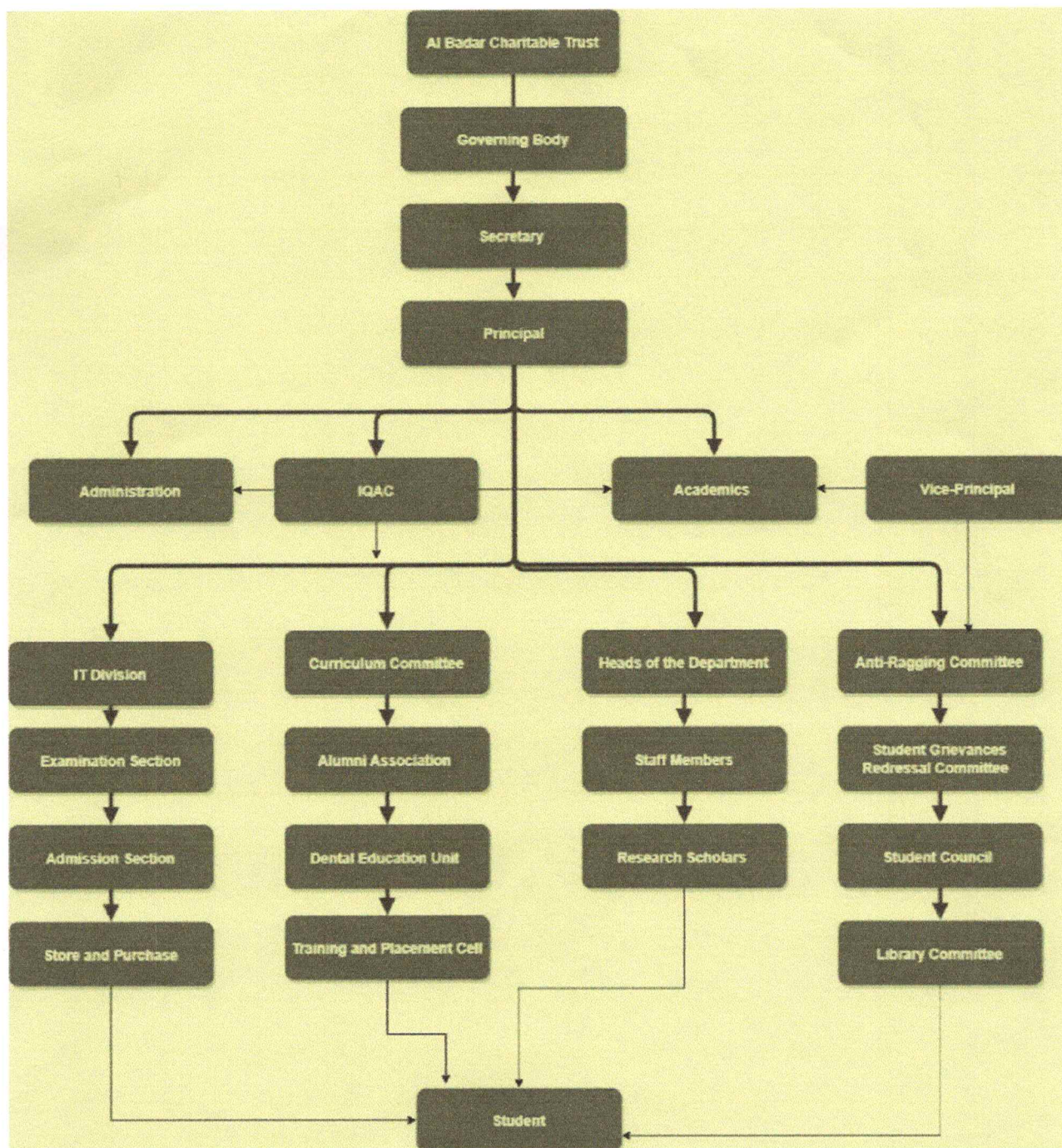


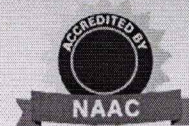
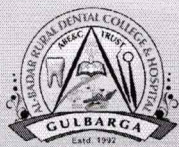
Organization Structure



Sy. No. 12

PRINCIPAL

Al-Badar Rural Dental College
& Hospital, KALABURAGI



HIERARCHICAL STRUCTURE

The college runs under the Al Al-Badar Dental College , Kalaburagi. The college has developed systematic organizations management through hierarchical structure.

The Governing Council is chaired by Dr. MA Mujeeb, Chairman, Al-Badar Dental College, Kalaburagi. It involves the Management Members, External Experts, Principal as ex-officio secretary and teaching staff representative. Top end decisions taken by the Governing Council are shared through Principal to other stakeholders.

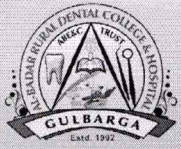
Principal has autonomy to take all administrative and academic decisions as per the code of conduct of the institution. Vice-Principal is also appointed to assist principal in different academic and administrative authorities.

Internal Quality Assurance Cell: IQAC plays very significant role in college governance and leadership. Various policies are framed under the IQAC for Curricular Aspects, Teaching Learning and Evaluation, Research Innovation and Extension, Augmentation of Infrastructure as per the needs of the educational programmes offered by the institution. College strictly adheres to the policies and procedures developed by the IQAC for various institutional operations.

Heads of the Department are given responsibility to manage the assigned academic department and various activities as per the requirement to achieve the academic excellence.

College has also set up different committees for decentralization and Participative management and to groom the leadership at various levels:

1. Internal Quality Assurance Cell
2. Library Committee
3. Infrastructure Commendation Committee
4. Student Grievances/Redressal Committee
5. Anti-Sexual Harassment Committee/ Internal Complaint Committee
6. Anti-ragging Committee



Al-Badar Educational & Charitable Trust's

AL-BADAR DENTAL COLLEGE & HOSPITAL, KALABURAGI

Affiliated to Rajiv Gandhi University of Health Sciences Bangalore &
Recognized by Dental Council of India (New Delhi)



7. Curriculum Committee
8. International Student Cell
9. Dental Education Unit
10. Sports & Cultural Committee
11. Institutional Ethics Committee
12. Boys & Girls hostel Committee
13. Students Welfare Council
14. Alumni Association Committee
15. Placement Cell

Sy. Jyoti

PRINCIPAL

Al-Badar Rural Dental College
& Hospital, KALABURAGI